

Welcome to the King Street Transit Pilot

The King Street Transit Pilot between Bathurst Street and Jarvis Street is about putting people and transit first by improving transit reliability, speed, and capacity. King Street is the busiest surface transit route in the city, moving more than 65,000 riders on an average weekday. The pilot is changing how King Street works, by not allowing through movement at most intersections for private vehicles and providing priority to streetcars. Local access for vehicles will be maintained on a block by block basis. Use this map to determine how to best navigate where you need to go. For additional information please visit the project website: toronto.ca/kingstreetpilot

Please Note: Only new restrictions are shown on this map.

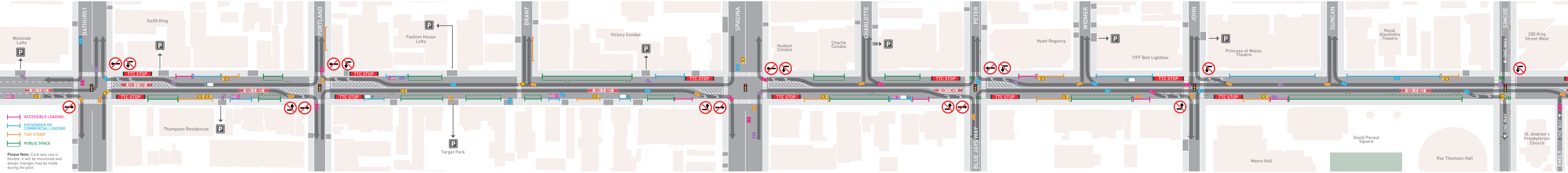
Right Turns on and off of King Street
 Vehicles turning right onto King Street must turn into the streetcar lane. Vehicles turning right off of King Street must use the right turn lane.

Parking on King Street
 There is **no on-street parking** in the pilot area. Parking is available on some side streets and in parking lots and garages near King Street.

Accessible Loading
 There are dedicated on-street spaces for accessible passenger loading. Vehicles with an accessible permit are allowed to stop to pick-up and drop-off passengers.

Passenger Pick up/Drop off, Loading and Deliveries
 There are dedicated on-street spaces for passenger pick-up and drop-off, as well as short-term loading and deliveries. Standing and/or parking is not allowed.

Bicycling
 Cyclists are allowed to continue to use King Street, travelling straight through at intersections.



- ACCESSIBLE LOADING
- PASSENGER OR COMMERCIAL LOADING
- TAXI STAND
- PUBLIC SPACE

Please Note: Curb lane use is flexible, it will be monitored and design changes may be made during the pilot.

Traffic at Bathurst Street
 Vehicles on King Street are **not allowed** to drive through the Bathurst Street intersection. At the intersection eastbound vehicles must turn left or right. Westbound vehicles must turn right.

No Through Traffic
 Vehicles are **not allowed** to drive through the intersection. Except for: TTC vehicles, emergency vehicles, bicycles and road maintenance vehicles. Taxis are allowed to travel through the intersections between 10 p.m. and 5 a.m.

No Left Turn
 Left turns from King Street at intersections are **not allowed** while driving or biking within the pilot area. However, cyclists can use the bike boxes at Peter Street and Simcoe Street to turn left in two stages.

TTC Streetcar Stops
 Streetcar stops have moved to the far side of intersection, with protected passenger waiting areas in the curb lane. There are two locations where streetcar stops will remain on the near side of the intersections, on the sidewalks: King at Bathurst (westbound) and King and Portland (westbound).

Bike Box
 Bike boxes are located at two intersections where there are north-south streets with bike lanes: Peter Street and Simcoe Street. Bike boxes are designated spaces to help cyclists make left turns from King Street. Cyclists should wait in the boxes in front of cars at a red light, and then proceed north-south when the light turns green.

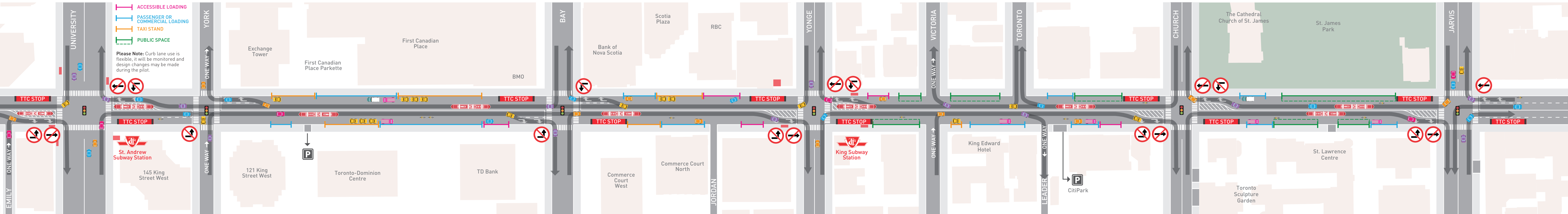
Flip over to continue your journey along King St.

North-South Traffic
Vehicles travelling on north-south streets can still cross King Street as they did before the pilot.

Taxis
There are dedicated on-street taxi spaces for passenger pick-up/standing. From 10 p.m. to 5 a.m., taxis are allowed to travel through the intersections. At all other times, taxis must follow the same regulations as other motorists.

New Public Spaces
There will be new public spaces created in the curb lane within the pilot area. These spaces may include seating, sidewalk cafés, or bicycle parking.

Traffic at Jarvis Street
Vehicles on King Street are **not allowed** to drive through the Jarvis Street intersection. At the intersection westbound vehicles must turn left or right. Eastbound vehicles must turn right.



Driveway Access
Driveway access is maintained throughout the pilot area.

Advance Right Turn Green Arrow Signal
At some intersections, there will be an advanced right turn green arrow for vehicles. These arrows are new, so please be careful as you make the turn and watch for pedestrians.

Walking
At some intersections, there will be advance right turn green arrows for vehicles. Pedestrians are required to wait for their signal to cross the street.

Accessing your destination on King Street
Enter King Street via the closest north-south street which gets you on the same side of the street as the address you are looking for. Use parallel streets to access different points on King Street (Richmond Street, Adelaide Street, Wellington Street, Front Street, Lake Shore Boulevard or the Gardiner Expressway).

KING STREET TRANSIT PILOT

INFORMATION BOOKLET

toronto.ca/kingstreetpilot
#kingstreetpilot